



GMT MONTHLY MEMBERSHIP PROGRESS REPORT

Results as of: 1/31/2020

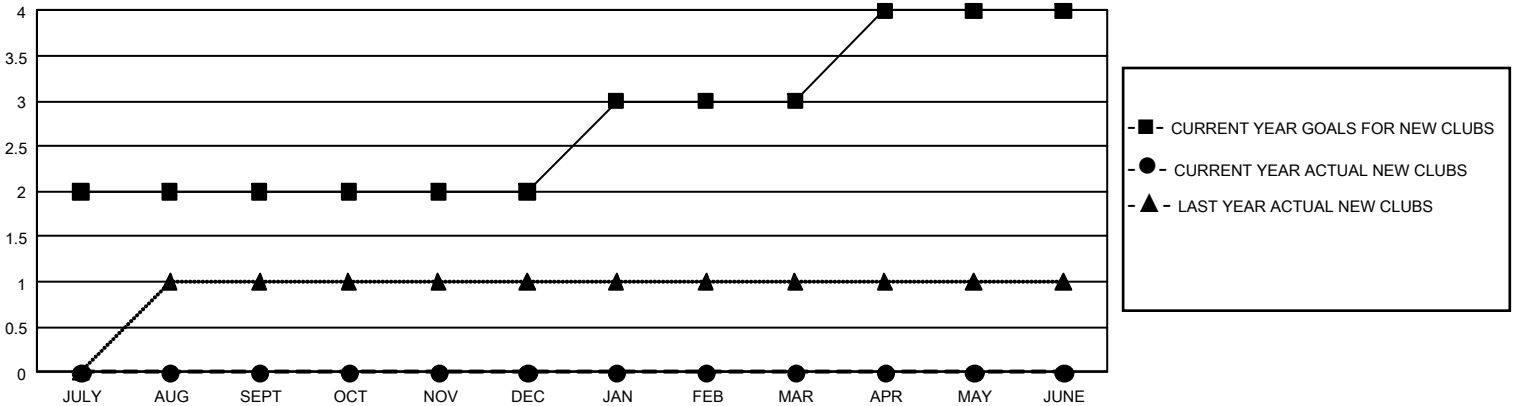
GMT Constitutional Area 7, Group B

GMT: OPEN

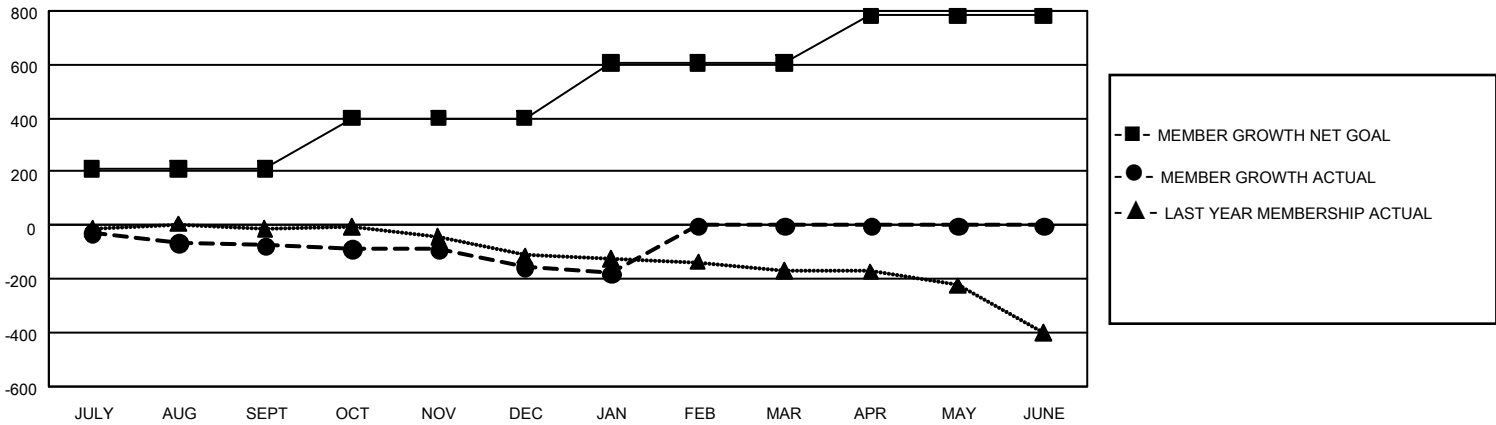
REPORT DOES NOT INCLUDE CLUBS IN UNDISTRICTED AREAS.

Clubs				Members			
RESULTS FOR 2019-2020				RESULTS FOR 2019-2020			
QUARTER	NEW CLUB GOAL	NEW CLUBS	DROPPED CLUBS	QUARTER	MEMBER GROWTH NET GOAL	MEMBER GROWTH ACTUAL	DROPPED MEMBERS ACTUAL (including transfers)
JULY/AUG/SEPT	6	0	1	JULY/AUG/SEPT	633	182	227
OCT/NOV/DEC	0	0	0	OCT/NOV/DEC	570	158	219
JAN/FEB/MAR	3	0	1	JAN/FEB/MAR	618	33	52
APR/MAY/JUNE	3	0	0	APR/MAY/JUNE	525	0	0

GOALS AND ACTUAL NEW CLUBS CUMULATIVE



GOALS AND ACTUAL MEMBERS CUMULATIVE



DROPPED CLUBS: 2	153 CLUBS OF 342 ADDED 1 OR MORE NEW MEMBERS	<u>GENDER DISTRIBUTION</u> MALE 6,275 (69.61%) FEMALE 2,739 (30.39%)
<u>DROPPED MEMBERS</u> DECEASED 89 CLUB CANCELLED 0 OTHER 407 <hr/> TOTAL 496	CLICK HERE FOR CUMULATIVE MEMBERSHIP DATA	TOTAL FAMILY UNIT MEMBERS 772 FAMILY MEMBERS PAYING HALF DUES 391